



Welcome to EYFS

Where the learning and fun begin!

01

What is EYFS?

02

The FS Framework

03

The Curriculum

04

Learning through
Play

05

Communication

06

Rules



01

What is EYFS?



The Early Years Foundation Stage covers children from birth till 5 years of age. It outlines the learning and development of children during this phase of their lives.





02 The Framework



We follow the EYFS Framework.
This tells us what children need to learn and
how.

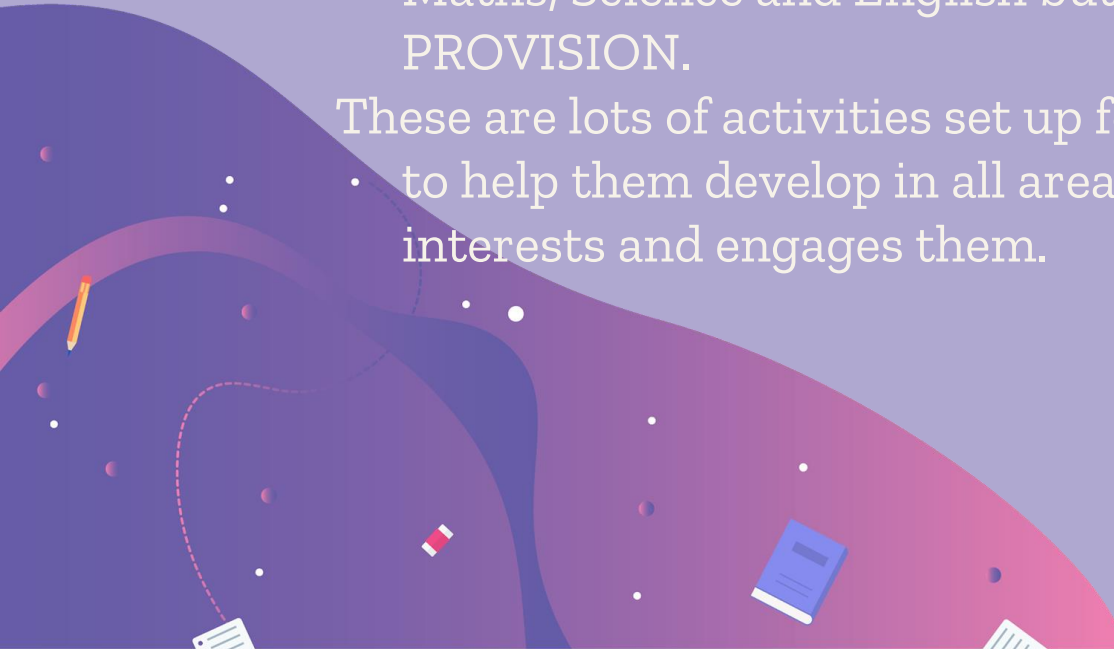
It shows the age related progress expected
in each area of development.

The Early Years is all about learning and Exploring.

The children do not have traditional, specific lessons like Maths, Science and English but instead have CONTINUOUS PROVISION.

These are lots of activities set up for children to access freely

- to help them develop in all areas of learning in a way which interests and engages them.





03

The Curriculum



3 PRIME AREAS



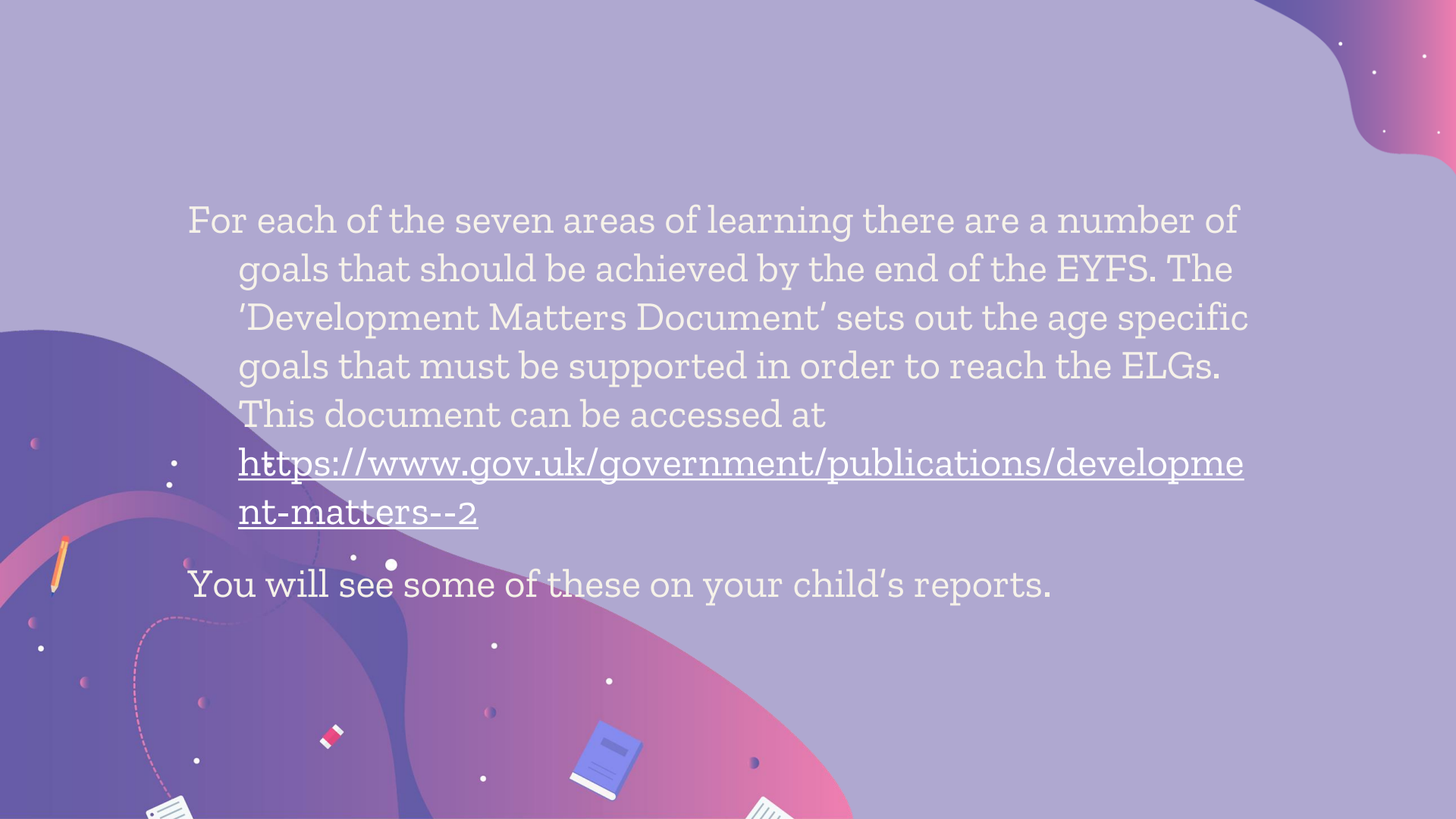
- Communication and Language
- Physical Development
- Personal, Social and Emotional Development

4 SPECIFIC AREAS



- Literacy
- Maths
- Understanding the World
- Expressive Arts and Design

The idea is that if children do not develop skills in the Prime Areas they will not be able to access the Specific Areas.



For each of the seven areas of learning there are a number of goals that should be achieved by the end of the EYFS. The 'Development Matters Document' sets out the age specific goals that must be supported in order to reach the ELGs.

This document can be accessed at

: <https://www.gov.uk/government/publications/development-matters--2>

You will see some of these on your child's reports.

Assessment in Foundation Stage

Throughout the FS children are assessed as they work, play and interact with their peers. These assessments are based upon the age specific targets that must be met as laid out by the 'Development Matters Document' for the EYFS.

- At the end of their Reception year you will receive their Foundation Stage Profile which shows the teachers final assessments against the Early Learning Goals

https://assets.publishing.service.gov.uk/government/uploads/system/uploads/attachment_data/file/974907/EYFS_framework_-_March_2021.pdf

<https://www.theschoolrun.com/what-early-years-foundation-stage-profile>

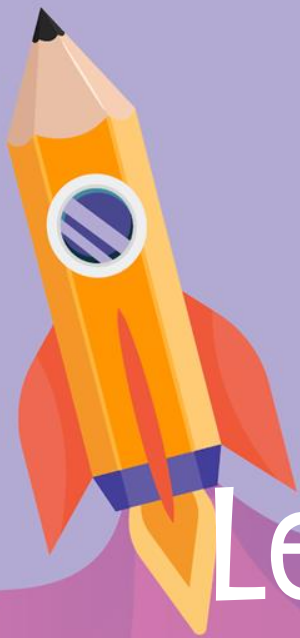
At EBIS we implement The 'Read, Write Inc' Phonics, reading and writing system, the students are taught the letter sounds rather than the letter names.

https://mail.google.com/mail/u/0?ui=2&ik=2c80fa312b&attid=0.1&permmsgid=msg-f:1744304700253574846&th=183503e216a896be&view=att&disp=inline&realattid=f_1877stt20

https://mail.google.com/mail/u/0?ui=2&ik=2c80fa312b&attid=0.3&permmsgid=msg-f:1744304700253574846&th=183503e216a896be&view=att&disp=inline&realattid=f_1877tuvx2


Following on from 'Read, Write, Inc' the children use the Oxford Reading Tree Series for reading.





04

Learning through Play



Children learn through exploring and playing. This is why our EYFS setting is designed to encourage children to explore different resources and materials in both an indoor and outdoor setting. This helps to ensure that children develop skills in all areas of learning.

The adults role is to support and guide.

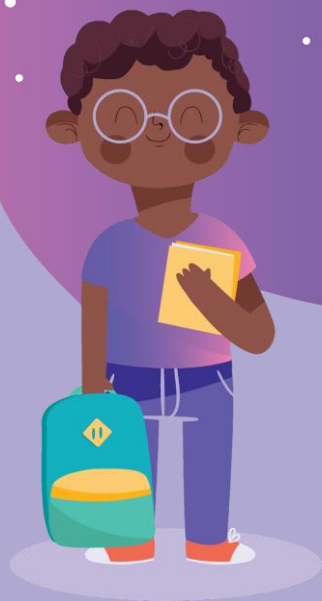
05 Communication



Class Newsletters.

Parent Communication via the parent portal.

Phone Calls (please feel free to call the school at any time but please remember that it is very difficult for teachers to take your phone calls since they are usually in the class.



06 Rules

Healthy Eating Policy

- EYFS children have no access to the school canteen
- Ensure they have enough food for two small meals
- Enough water especially on hot days.

Medication

- Teachers are not permitted to administer any medication. A sick child should be kept at home.
- Medication for any chronic illnesses must be kept in and administered by the school clinic.

Communication

- Please refrain from sending any messages with bus matrons or at the gate in the a.m./p.m.
- Please use the parent portal as the main method of communication with teachers.
- Phone calls to the office in case of any emergencies.

Drop off and Collection

- Please ensure that you are on time.
- Please ensure that you have your child's gate card
- In case of an emergency please call the office to inform us of any changes.

Transportation

Your child should be ready for the bus, a few minutes delay can cause problems for other students and will greatly delay the arrival time.

Please ensure that your child understand the importance of following instructions given by the bus matron. She is there in the interest of their well being and safety.

If your child is a gate student please ensure that you arrive daily before 8 a.m. and that your child is collected no later than 3 p.m..



Trips

- A soft and hard copy of the details will be sent
- You must sign your consent and send the slip back to school before the deadline
- NO exceptions can be made after the deadline date
 - Those not attending must be kept at home

MFL

- A simple introduction to French and German
 - One term French, One term German
- Help make a decision regarding final MFL choice

How can you help your child

- ❖ Bring your child to school daily and on time.
- ❖ Read with your child at home.
- ❖ Voice your concerns about your child's progress.
- ❖ If the teacher has a problem with your child's progress rest assured that she will contact you immediately.

OUR TEAM



Suzanne Halder

Head of EYFS



Noha Khairy

Deputy Head of EYFS

Rania Fahmy
EYFS Assistant Head



CREDITS: This presentation template was created by **Slidesgo**, including icons by **Flaticon**, and infographics & images by **Freepik**

THANKS

Does anyone have any questions?

Suzanne.h@ebis-cordia.com

01119804888

Egypt British International
School



Please keep this slide
for attribution